



Hills®

Lance & Nozzle Kit for Garden Sprayers

Product Manual



Important

Read these instructions before assembly and use.

Release pressure from the bottle before refilling or replacing parts. This is done by slowly pulling up the Safety Valve and holding until all air has been released. Then unscrew the Container Cap.

Note: some remaining air may be expelled.

Ensure bottle has been rinsed with clean water before any servicing is done.

Note: Inspect your Nozzle and Lance for damage. This pack contains replacement parts for the Nozzle and Lance. It also includes an Extension Lance for hard-to-reach applications.

Pack contents

Part name	Qty.
Nozzle assembly with Cone spray	1
Nozzle Strip spray	1
Lance with Caps and O Rings	1
Extension Lance with Caps and O Rings and Joiner	1

Please retain this Product Manual. Record the following information for future reference.

Product Number (printed on label): FH _____

Date of purchase: _____

Name and location of store: _____



Designed and tested under a
Quality System that meets Hills
demanding quality specifications.

Made in China

1. Nozzle Replacement

Your new Nozzle comes with two spray patterns. One for cone spray and one for strip spray pattern. Choose the one suitable for your particular spraying application.

- 1.1 To fit strip spray, remove the green Nozzle from the grey attachment cap. Refer to (Fig. 1 and 2).
- 1.2 Remove the nozzle from cap. Refer to (Fig. 3).
- 1.3 Re-assemble the two green halves of Nozzle and store safely.
- 1.4 Place strip spray Nozzle into rear of attachment cap along with filter. Refer to (Fig. 4).
- 1.5 Replace assembly onto end of Nozzle elbow. Refer to (Fig. 5).

Fig. 1

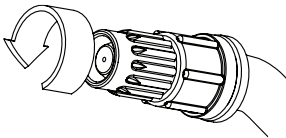


Fig. 2

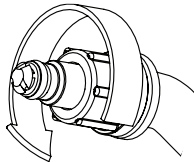


Fig. 3

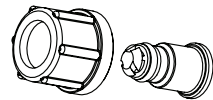


Fig. 4

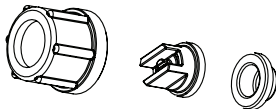
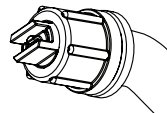


Fig. 5



Note: Do not use hand tool to tighten.

2. Nozzle and Lance Replacement

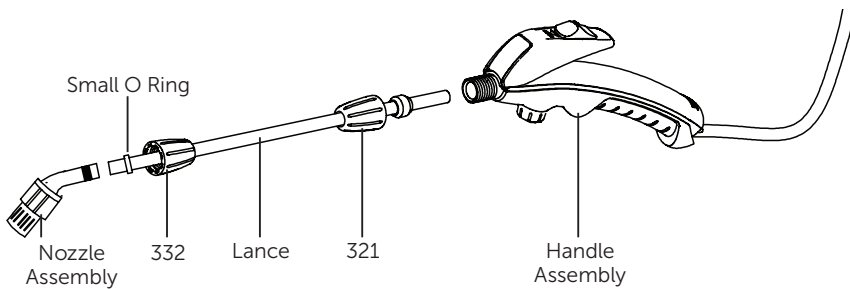
Nozzle and Lance – To Remove

- 2.1 Unscrew the Large Handle Retaining Cap **321** and pull the Nozzle and Lance out of the Handle Assembly.
- 2.2 Discard the old Lance assembly.

Nozzle and Lance – To Replace

- 2.3 Fit the new Nozzle assembly onto the Lance end with the Small O Ring and Small Retaining Cap **332**. Tighten firmly.
- 2.4 Fit Nozzle and Lance assembly into the Handle assembly and tighten the Large Handle Retaining Cap **321** firmly.

Note: Do not use hand tools to tighten.

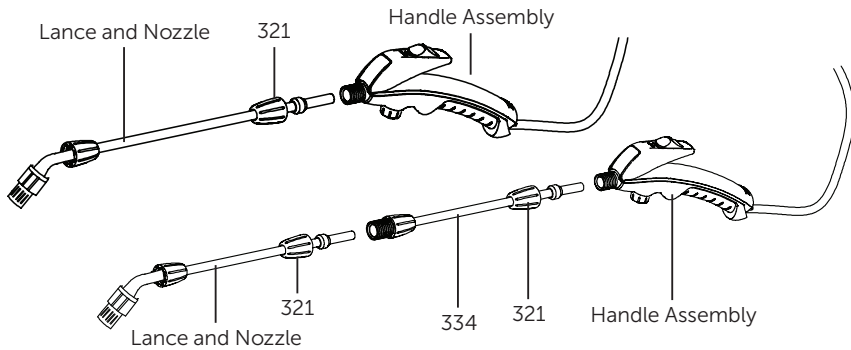


3. Extension Lance

Can be added to the existing Lance to help in hard-to-reach applications

- 3.1** Unscrew the Large Handle Retaining Cap **321** and pull the Lance and Nozzle out of the Handle Assembly. Inspect parts. If they are still in good condition they can be re-used.
- 3.2** If they are not in good condition then discard them and use the new Lance and Nozzle supplied in the kit.
- 3.3** Push the Extension Lance **334** into the Handle Assembly and tighten the Handle Retaining Cap **321** firmly.
- 3.4** Push the other end of the Extension Lance **334** into the Nozzle and Lance and tighten the Retaining Cap **321** firmly.

Note: Do not use hand tools to tighten.



Safety Instructions

Caution: contents under pressure. Read this before operating.

- Release pressure from the bottle before refilling or replacing parts. This is done by slowly pulling up the safety valve and holding until all air has been released. Then unscrew the container cap.
Note: some remaining air may be expelled.
- Inspect the condition of all fittings before each use. Do not attempt to use your sprayer with worn or damaged parts. These parts should be replaced. (Refer to spare parts list.)
- Safety valve operation: over pumping will cause the safety valve to open and release excess pressure. It will close when safe operating pressure is reached.
- Safety valve test: fill the bottle completely with clean water and pressurise by pumping. When the sprayer is fully pressurised the valve should lift, allowing the red indicator to become visible and air to escape. If this does not happen, replace the safety valve.
- Your sprayer is made from many different types of plastic materials, and although the liquid you may wish to use is packed in a plastic container, it is not guaranteed that it will not damage your sprayer. Your sprayer is designed for use with a broad range of domestic water-based herbicides, fungicides, insecticides and fertilisers. Do not use other types of chemicals as they may be detrimental to the safe operation of your sprayer.
- Follow chemical suppliers on-pack instructions.

Do

- ✓ Release pressure before filling/servicing
- ✓ Release pressure and clean after use
- ✓ Wear safety goggles and gloves
- ✓ Wear protective clothing and mask
- ✓ Spray water-soluble chemicals
- ✓ Ensure adequate ventilation
- ✓ Wash hands and face after use
- ✓ Store away from sunlight
- ✓ Hand tighten fittings only
- ✓ Rinse inside of bottle before use
- ✓ Maintain and service regularly
- ✓ Read and understand chemical manufacturers' safety directions

Do Not

- ✗ Spray flammable liquids or solvents
- ✗ Leave full bottle unattended
- ✗ Eat, drink or smoke when spraying
- ✗ Direct spray on humans or animals
- ✗ Spray in windy conditions
- ✗ Spray in confined spaces
- ✗ Leave within reach of children
- ✗ Overfill the bottle
- ✗ Over-pressurise
- ✗ Stand sprayer near naked flame or hot surfaces
- ✗ Tighten fittings with pliers, etc.
- ✗ Allow children to use as a toy
- ✗ Modify bottle or safety valve

Hills Contacts

We are committed to providing you with complete customer satisfaction. If you have any questions or comments about our products or services please contact your nearest Customer Service Centre during their local business hours:

Australia

1300 300 564

hhl.enquiries@woolworths.com.au

New Zealand

0800 021 027

hhl@progressive.co.nz

Hills Websites

hillshome.com.au

Hills Home Living

hillshome.com.au/need-help/

Hills Consumer Advice

